

**Coordinated
Incident
Management
System**
for
**Avalanche
Search and Rescue**

Programme

- Context
- Challenges
- Comprehensive EM
- Principles
- Elements
- Key components

THINK...

- How does this apply to me...?
- How does it apply to Avalanche SAR...?
- How does it apply in the way we work with others...?

Application & Contextualisation



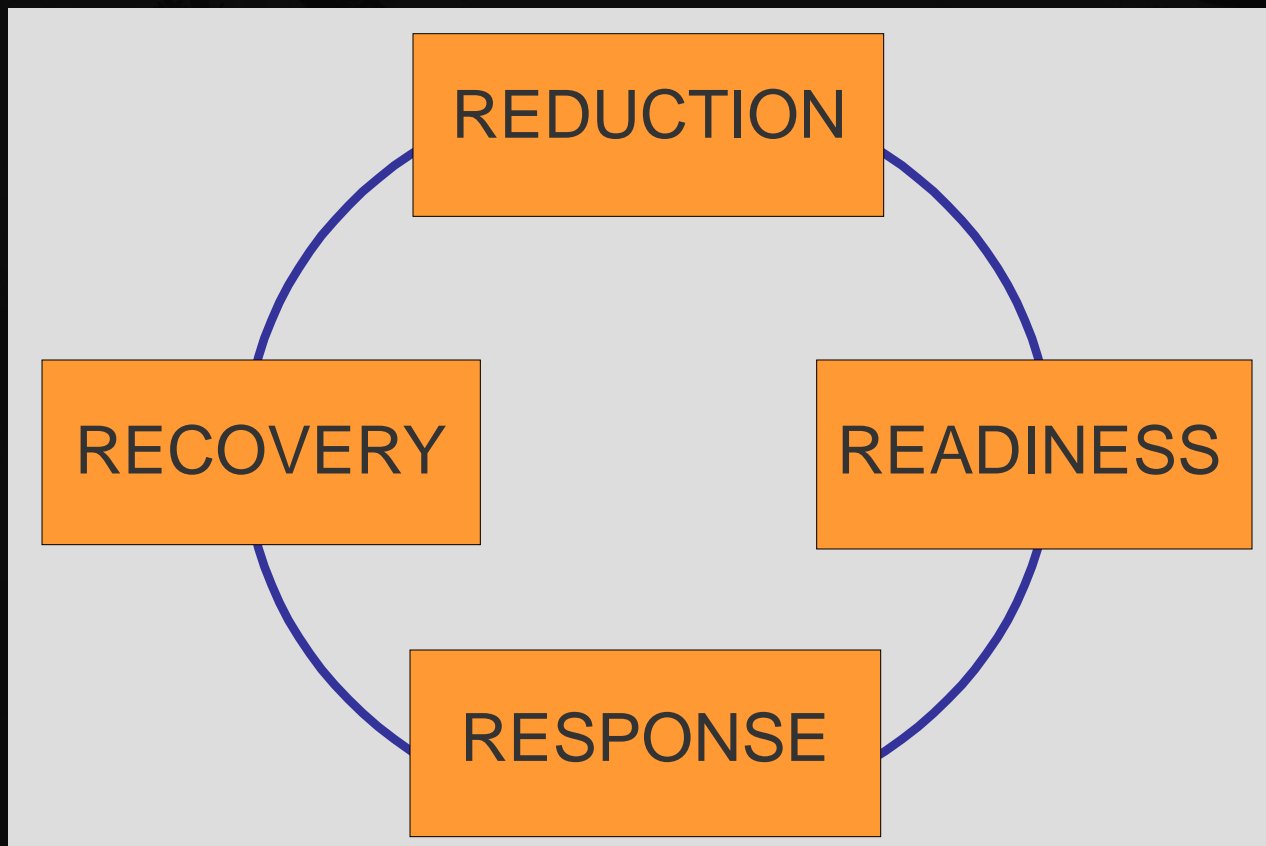
Challenges

- Timeframe
- Remoteness
- Specialist skills
- Diverse scattered resource
- Multiple agencies
- Low occurrence
- High complexity
- Structured vs Reflex

CIMS

- A structure to manage emergency incidents
- Defines rules for the organisations involved

Comprehensive Emergency Management



CIMS Principles

- Common management structure and terminology
- Inter-organisational co-ordination
- Incident action planning

CIMS Elements

1. Common terminology
2. Span of control
3. A modular organisation
4. Integrated communications
5. Consolidated Incident Action Planning
6. Designated incident facilities
7. Comprehensive resource management

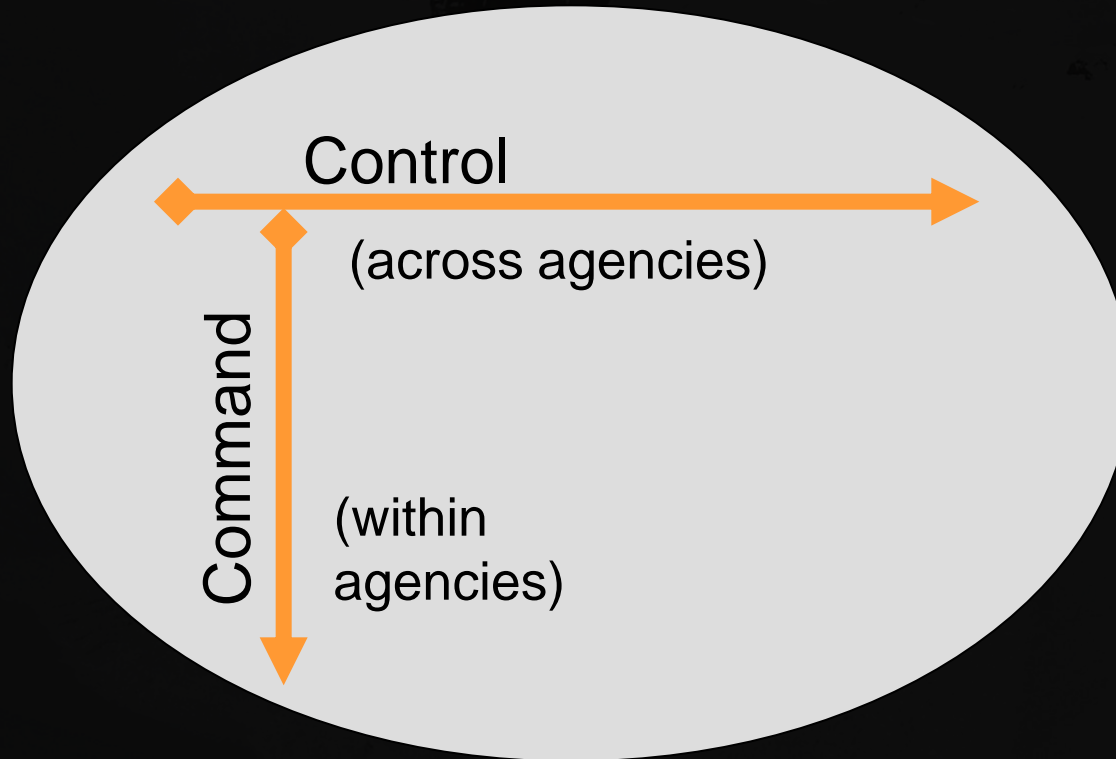
Lead Agency

- Authority for control
- Determined by Statute, Agency protocols, agreements

Support Agency

- Contributing services or resources to a lead agency

Command and Control

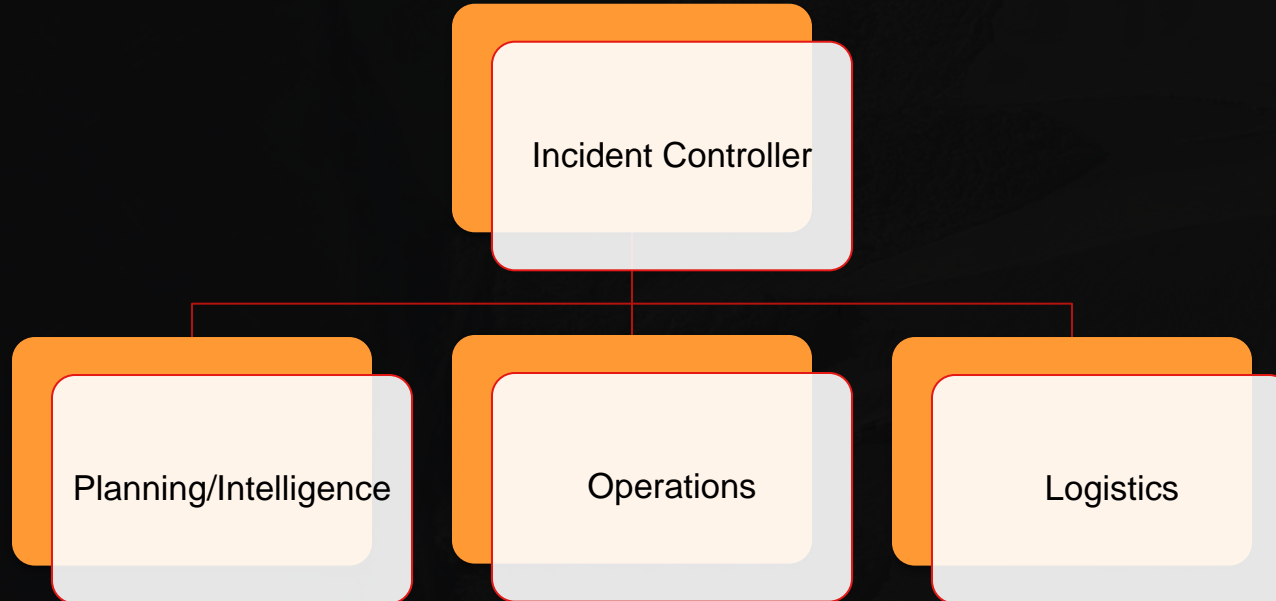


Four Key Components

- Control
- Planning/intelligence
- Operations
- Logistics

The foundation on which CIMS is built

Incident Management Diagram



Responsibilities of the Incident Controller (IC)

- Assume control
- Establish ICP
- Protect life and property
- Establish CIMS structure
- Appoint, brief and task staff
- Initiate the Incident Action Plan (IAP) planning cycle
- Liaise with outside agencies

The function of Operations

- Managing operational activities directly related to resolving the incident
- Providing input into the IAP
- Setting the operational structure
- Identifying resources (required)
- Implementing the IAP

Planning/Intelligence

- Gathering and disseminating information
- Analysing incident data
- Identifying resource requirements
- Preparing the IAP
- Maintaining resource status and location

Logistics

Logistics Section is responsible for providing and maintaining all...

- Personnel
- Materials
- Facilities
- Services

Advantages of one system

- Operational effectiveness
- Same objectives and collective approach
- Effective information flow
- Better understanding of the whole picture
- Cost- effective



SARINZ

**SEARCH AND RESCUE INSTITUTE
NEWZEALAND**

Helping others save lives

Thank you