



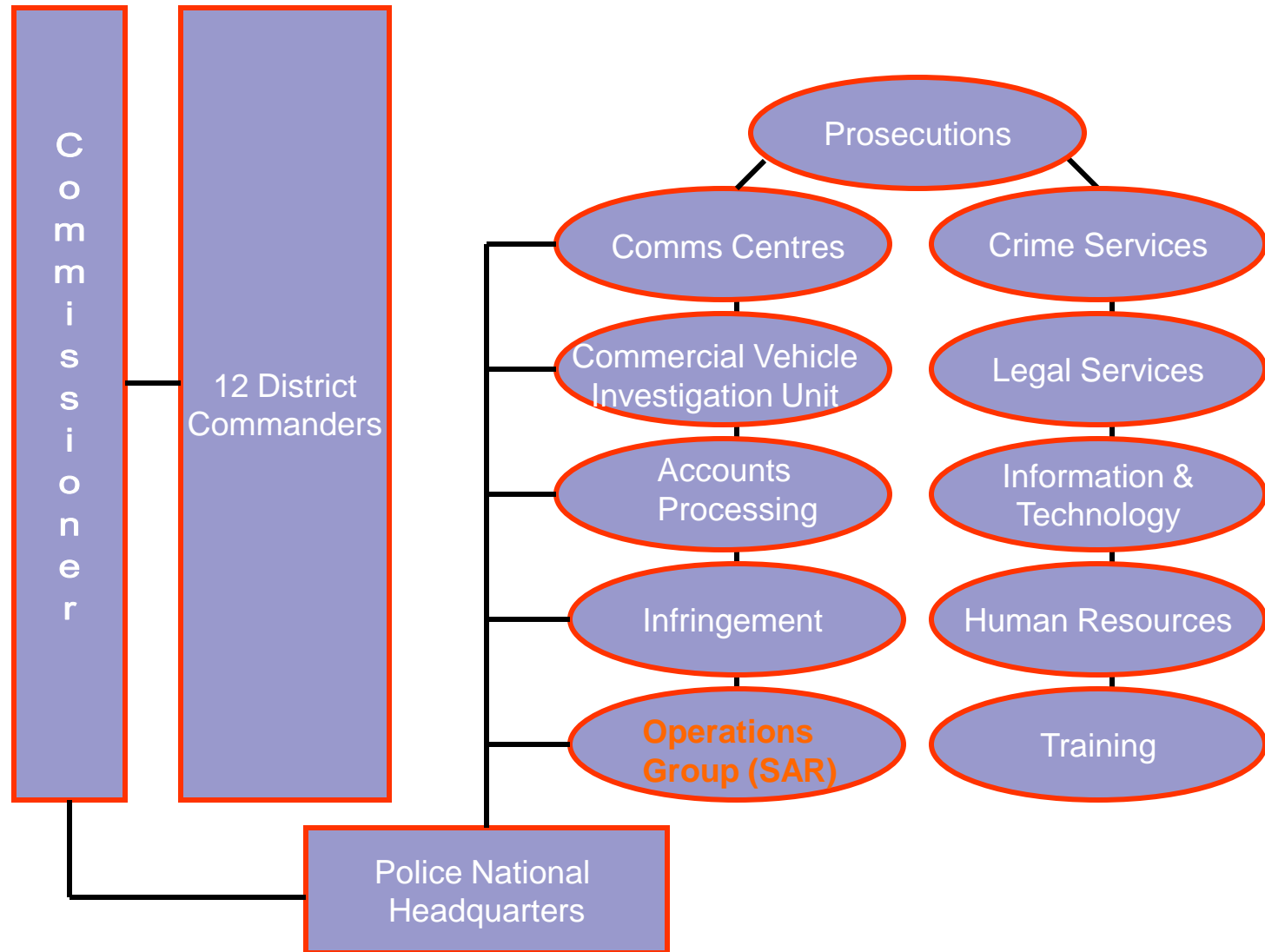
COMMUNICATIONS

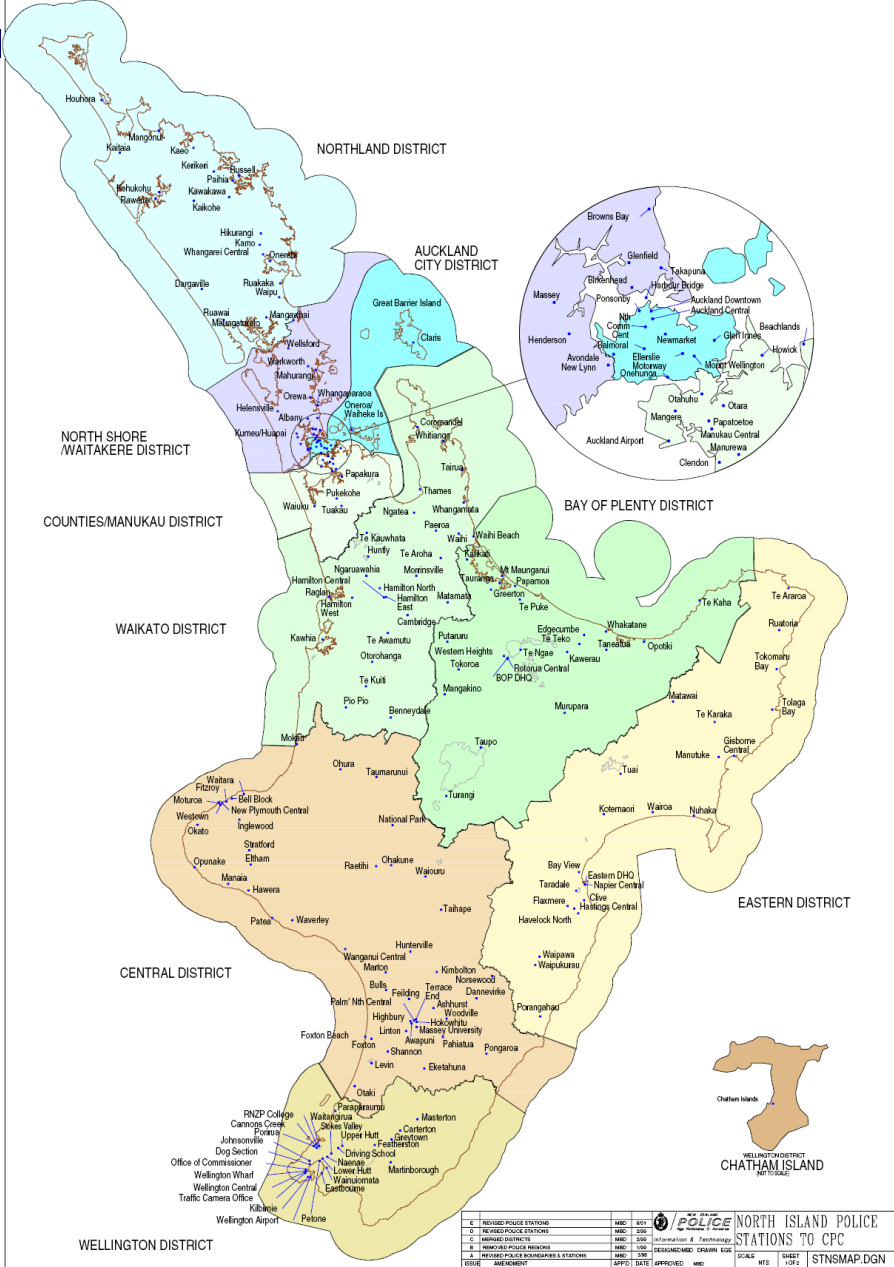


Police SAR Structure

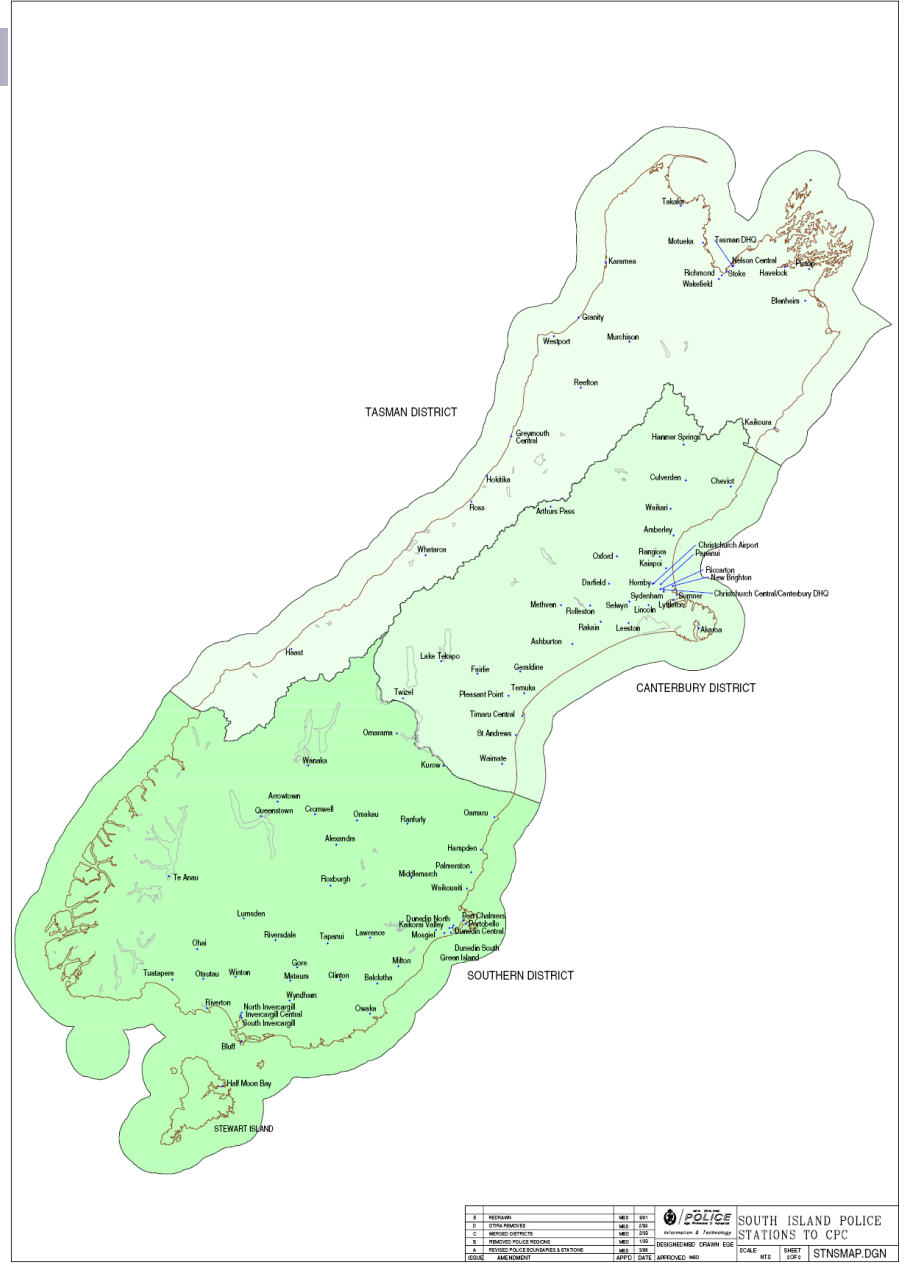
- 12 Police Districts
- 24 SAR squads responsible for areas within their districts.
- Squad members trained in SAR and Disaster Victim Identification (DVI)
- Full time SAR Coordinators in Canterbury, Tasman, Wellington, Central, Auckland
- 2 persons at PNHQ

The Big Picture





1	PREVIOUS POLICE STATIONS	MSD	851	POLICE NORTH ISLAND POLICE STATIONS TO CPC
2	NEW POLICE STATIONS	MSD	852	
3	MANUKAU DISTRICT	MSD	853	
4	NEWCASTLE DISTRICT	MSD	854	
5	PREVIOUS POLICE STATIONS & STATIONS UNDER REVIEW	MSD	855	



1	PREVIOUS	MSD	851	POLICE SOUTH ISLAND POLICE STATIONS TO CPC
2	OTHER DISTRICTS	MSD	852	
3	PREVIOUS POLICE STATIONS	MSD	853	
4	PREVIOUS POLICE STATIONS & STATIONS UNDER REVIEW	MSD	854	
5	PREVIOUS POLICE STATIONS & STATIONS UNDER REVIEW	MSD	855	



On An Average Day

- 1500 emergency calls
- 2500 general enquiry calls
- 1100 crimes recorded
- 1000 speeding infringement notices issued
- Carry out over 310 new arrests and prosecutions
- Travel around 180,000 kilometres




SAR Activation Process

- Incident
- Call to Police Communications Centre 111
- Communications centre activate SAR Plan
- If urgent will dispatch resources such as Coastguard, helicopter
- Police SAR Coordinator for that area contacted
- CIMS used to coordinate a search



POLICE COMMUNICATIONS CENTRES

- Centres located in Auckland, Wellington, Christchurch
- Centres receive all emergency phone calls
- 111 lines receive priority
- Call takers initiate action based on priority
- Hand over when practicable to Incident Controller



Year	Emergency	Non Emergency
2005*	605,386	1,089,747
2006*	628,521	1,044,708
2007	693,114	1,098,227
2008	685,515	1,078,587
2009	697,737	1,100,553

* Crime Reporting Line was not operational



Christchurch Comms Centre

- MSOP and DMPs developed to cover off issues
- MSOPs cover areas such as SAR, alarms, bomb threats, crime, and section called Ski field emergencies, Avalanche Procedure



Police MSOP -

- The aim is to assist staff, particularly Comms, in the initial Field Deployment, resourcing and initial command and control of incidents



MSOP

- **Ski field Emergencies - Avalanche Procedure**

MSOP has sub headings

- **Call Taker - Ascertain**
- **Dispatcher – Action**
- **Team Leader - Policy & Control**
- **Notify Local Police**
- **Contact Neighboring ski fields**
 - with Ski Patrols
- **SAR Call Out (pager)**
- **Operational action/considerations**

Call Taker - Ascertain

- On receipt of an Alpine Emergency call (e.g. Avalanche) - keep the caller on the line
- Exact location Ski area (Ridge / Hill names, maps reference)
- Date and time of Accident / Incident
- First reported by. Their location now.
- Numbers of Persons/ Vehicles involved and/or buried
- Alert Supervisor immediately
- Enter Event - PRIORITY - P1
- Continuous detail for sitreps
- Numbers on ski field (if applicable)
- Has head count been initiated?
- Have any avalanche emergency transponders been activated?
- Ski patrol staff available?
- Who is co-ordinating search at present?
- Incident Control Point (ICP) / Assembly area for staff responding to call
- Response Teams Assembly Area . Helicopter landing areas
- Weather / General conditions at site - eg wind strength, cloud base, visibility
- Who has already been notified of avalanche and what action has been taken. eg on-site emergency / rescue teams



Dispatcher - Action

- Alert local units / callouts
- Rural units - Radio / Telephones / Pagers / SMAC's / Radio Call etc.
- Notify Ambulance / Hospital
- Provide regular sitreps to Field staff
- Maintain and update log
- Advise O/C SAR - On-call Duty member

Team Leader – Policy and Control

- Secure / organise helicopters (early before media etc)
- Usually 2 helicopters at a minimum required
- Co-ordinate initial helicopter deployment with St Johns - Confirm that Police remain in charge of incident
- Establish Communications with helicopters (Police radio / Cell phone etc)
- Brief and confirm re location. Co-ordinates/Mountains / Peak names.
- 1st Helicopter to take Paramedics and immediately available [Avalanche Search Dog](#) / Police Dog.
- Call duty Dogs: For details of Police Snow Dogs, or call O/C nearest dog section.
- Call [Avalanche Dog](#).
- Confirm best pickup location for helicopter transport of dog and handler.
- 2nd Helicopter to go direct from pickup point to scene - hold on standby until decision made re transport requirements etc
- 2nd Helicopter may be required to transport additional personnel resources
- This will be dependant on urgency for helicopter at scene
- Consider need for additional helicopters or place on Standby. (Size of task / area / numbers involved)
- Consider RNZAF availability
- Provide sitreps for Pilots



Notify Local Police

- Ensure Area Field Staff have been advised
- Alert O/C District and brief fully. Determine Assembly Area
- In conjunction appoint Incident Controller
- Provide sitreps



Contact Neighbouring ski fields - with Ski Patrols

- Brief
- Ascertain Ski Patrol / experts available to assist.
- Transport / Search Teams Assembly Area
Marshalling Point (MP)
- Consider / deployment of Helicopter for pick up
- Co-ordinate timings
- Ski Fields with Trained Ski Patrols / Searchers



SAR Call Out (pager)

- Consider Alpine and Cliff Rescue Team
- Notify DOC (If appropriate)

Operational action/considerations

- Assembly Area for Search staff
- Untrained staff, not to be deployed into the search area without expert Ski patrol / SAR personnel approval/control
- No fly zone (NOTAM)
- De-link channel
- Sitreps to Incident Controller / Field staff etc
- Sitreps to St Johns
- Redeployment of helicopters as needed
- Media liaison
- Record formal Command and Control hand over
- District CIMS trained staff to initiate Management action
- Debrief?



DMP South Canterbury

- This DMP should be read in conjunction with the relevant SAR land rescue and MSOP.

Plan Rationale

- **Notify District Operations Manager and/or relevant Area Commander**
Christchurch Police Operations Manager - Inspector Craig McKay - (to advise the District Commander)

Mid-South Canterbury Area Commander (c/o [Timaru Police](#)) - incidents at Mt Hutt and Erewhon ski fields.

Northern Area Manager (c/o [Papanui Station](#)) - incidents at Hanmer and Mt Lyford

Southern Area Manager (c/o [Hornby Station](#)) - incidents at Craigieburn Range ski areas and Temple Basin



Working Groups

- Look at avalanche incident
- Look at Communication occurring at that time—
ie ski guide radio's to base

- How can we make communications better
- Look at trigger, during, and post incident
- Not just from the police perspective, but all agencies





Lessons Wanganui

- Incident Controller is responsible
- must ensure a Incident Management Team is brought together
- open and frank discussions are held
- challenges are made to any assumptions/plans.
- SAR Coordinators need to ensure strong relationships exist between Police and SAR Partners.
- Police Land and Marine Pre Plans need to ensure capability of aviation rescue assets are regularly updated.