

New South Wales Land Search & Rescue

Response Procedures



Coordinating Authorities

- Australian Maritime Safety Authority
 - Maritime
 - Aircraft
- New South Wales Police Force
 - Land
 - Aircraft
 - marine



Appendix B: Search and Rescue Functions and Responsibilities

Overall Coordinator (See Note 1)		Function to be performed by or on behalf of the overall coordinating authority					
For land, sea and air Search and rescue	Responsible Authority	Provision and coordination of air SAR Units	Provision and coordination of land SAR Units	Provision and coordination of marine SAR Units	Communications (other than air/surface)	Air/ground communications for land search and rescue	Aircraft/ship communications where direct communications not available
In respect of aircraft on the International Civil, National Civil (VH) and Recreational Aviation Australia (RAA) registers; and manned space vehicles.	RCC	RCC	Police	RCC	RCC	RCC	RCC
In respect of ADF aircraft and foreign military aircraft in the Australian SRR (Other than ADF ship borne aircraft)	RAAF	RAAF	As arranged by RAAF/Army authorities	RAN	RAAF	RAAF	RAAF
In respect of ADF and foreign military ships and submarines and ship borne aircraft	RAN	RAN	As arranged by RAN/Army authorities	RAN	RAN	RAN	RAN
In respect of ADF and foreign military personnel in a land environment	Army	Army	As arranged by Army authorities	RAN	Army	Army	Army
In respect of pleasure craft and fishing vessels at sea and commercial/charter vessels that come under the jurisdiction of the State or Territory, unregistered aircraft (See Note 1), persons missing in a land or coastal environment, land vehicles, persons and vessels on inland waters, and all non-military vessels in port	Police	(a) Police (b) RCC (c) ADF when service aircraft are involved. (see note 2)	Police	Police	Police	Police/ RCC	Police
In respect of vessels other than those for which the police and defence force are responsible	RCC	RCC	Police	(a) RCC (b) Police See note 3	RCC	RCC	RCC
In respect of unidentified distress beacon alerts	RCC	RCC	Police	(a) RCC (b) Police See note 3	RCC	RCC	RCC

Notes:

1: Overall coordination responsibility may, if necessary, be transferred to or from Commonwealth and State/Territory, by agreement, during the conduct of a search and rescue mission

2: RCC involvement shall apply when Police have requested RCC to 1, Accept coordination of the air search; and/or 2, arrange for the provision of aircraft.

3: Police involvement shall apply when RCC have requested Police to 1, Accept coordination of surface air search; and/or 2, arrange for the provision of marine SRU Units

Policies/Procedures/Authority

- National Search & Rescue Manual
- National Land Search Operations Manual
- Intergovernmental Agreement between states and territories (Police in charge)
- NSW Police Incident & Emergency Standing Operating Procedures



Response Agencies

- New South Wales Police Force
 - Police Rescue Squad
 - Operational Support Group
 - Aviation Support
 - Communications etc
- Rural Fire service (v)
- National parks & Wildlife service
- State Emergency Service (v)
- Volunteer Rescue Association (v)
- Other volunteer & government agencies



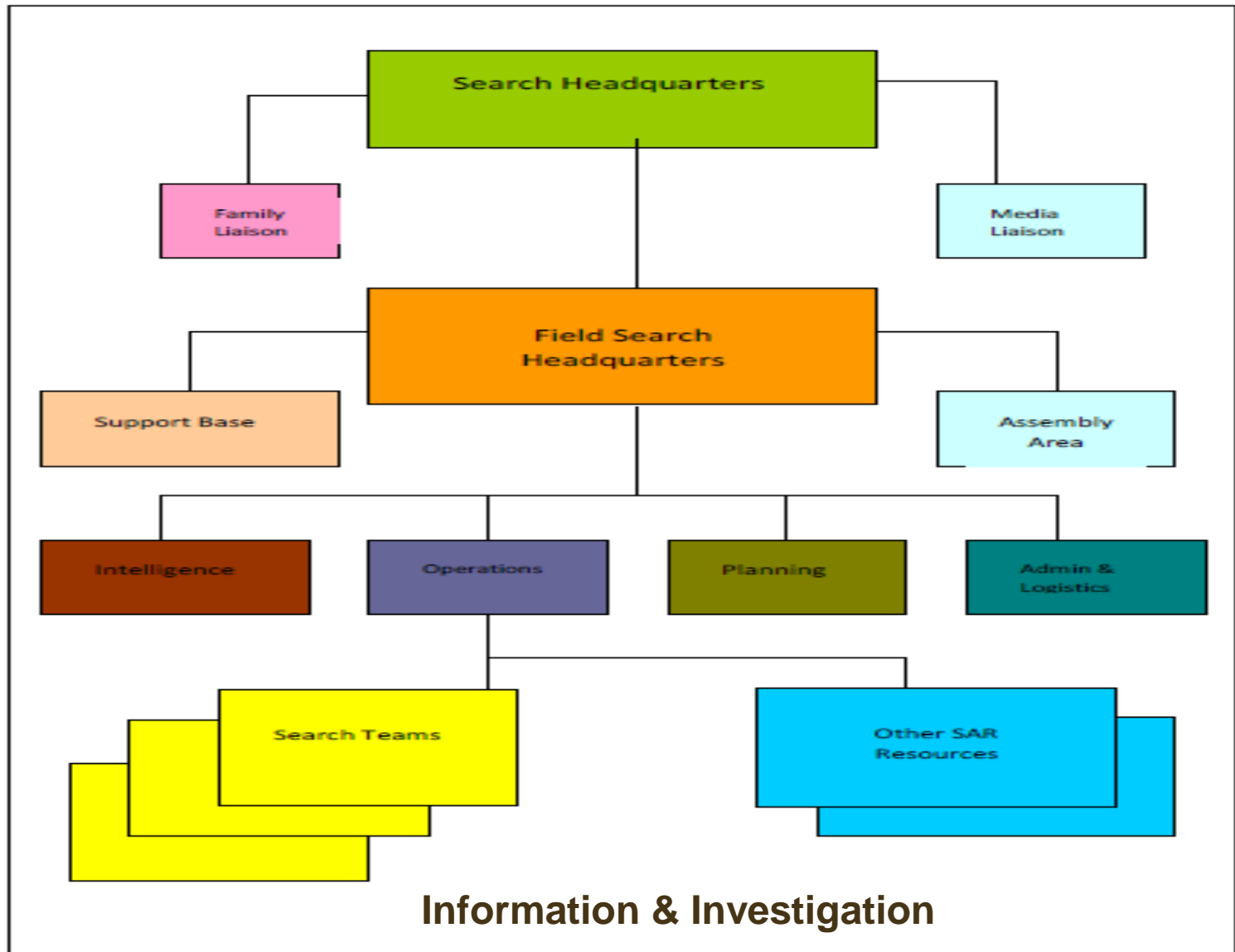
Management

- Police Control & Coordinate all land based searches through *Search Controller* and *Search Coordinator* roles
- Volunteer & other support agencies may perform roles within the ICS structure
- Police & other support agencies perform team leader roles



Appendix N

Land Search Organisation Chart



Training Requirements

- *Police Search Controller*
 - No formal SAR qualifications required, normally the senior police officer from the area where the SAR operation is being conducted
- *Police Search Coordinator*
 - Must have completed the State Land Search Coordinators Course or
 - The National Police Search Managers Course
- *Police Rescue Operators*
 - NSW Police Rescue Operators Course
- *Volunteer & other support agencies*
 - *Internal training courses*



Response

- Initial action on report of Lost person/s
 - Hikers Questionnaire
 - Missing Person questionnaire
 - Police Event Report
- Senior Officer/Supervisor reviews
- Advise Rescue & Bomb Disposal Unit
- Appoint Search Coordinator once decision to launch search operation
- Search Urgency Assessment completed



Response Continued

- PLB activation
 - Police from local area advised by AMSA of location of beacon, ongoing coordination between Police & AMSA until resolved
 - Initial actions resources responded to location (aircraft/medical/ground party)



Ongoing Operations

- Normally two Search Coordinators appointed to ongoing operation (>12 hours)
- Search Controller appointed by local Commander
- ICS implemented
- Records/logs maintained



Prevention

- Think before you TREK
 - Information
 - Trip Intention
 - Beacon loan



Statistics

- In 2008/2009 Police recorded 96 reported land searches*
- Of these approximately 30% fell into the category of “wanderer”
- Blue Mountains Police Rescue Squad attends an average of 55 searches per year
- The number of people diagnosed with dementia (in Australia) is projected to increase, with the number of cases increasing from 245,400 in 2009 to 1.13 million cases by 2050. (Alzheimers Australia/Access Economics)
- By 2016, the older population (people aged 65 years and over) is expected to outnumber the younger population (people aged 0-14 years) for the first time in the history of NSW. (Older People, NSW, 2004-ABS & others)

